

PART OF N.E. 1/4

14-3

SECTION 5, T.6N., R1W., S.L.B. & M  
IN OGDEN CITY, NORTH OGDEN CITY, NORTH OGDEN DISTRICT & TOWN OF HARRISVILLE

PREFIX: 11-014

SCALE 1" = 100'

SEE PAGE 14-2

TAXING UNIT: 03, 07, 12, 13, 14, 10

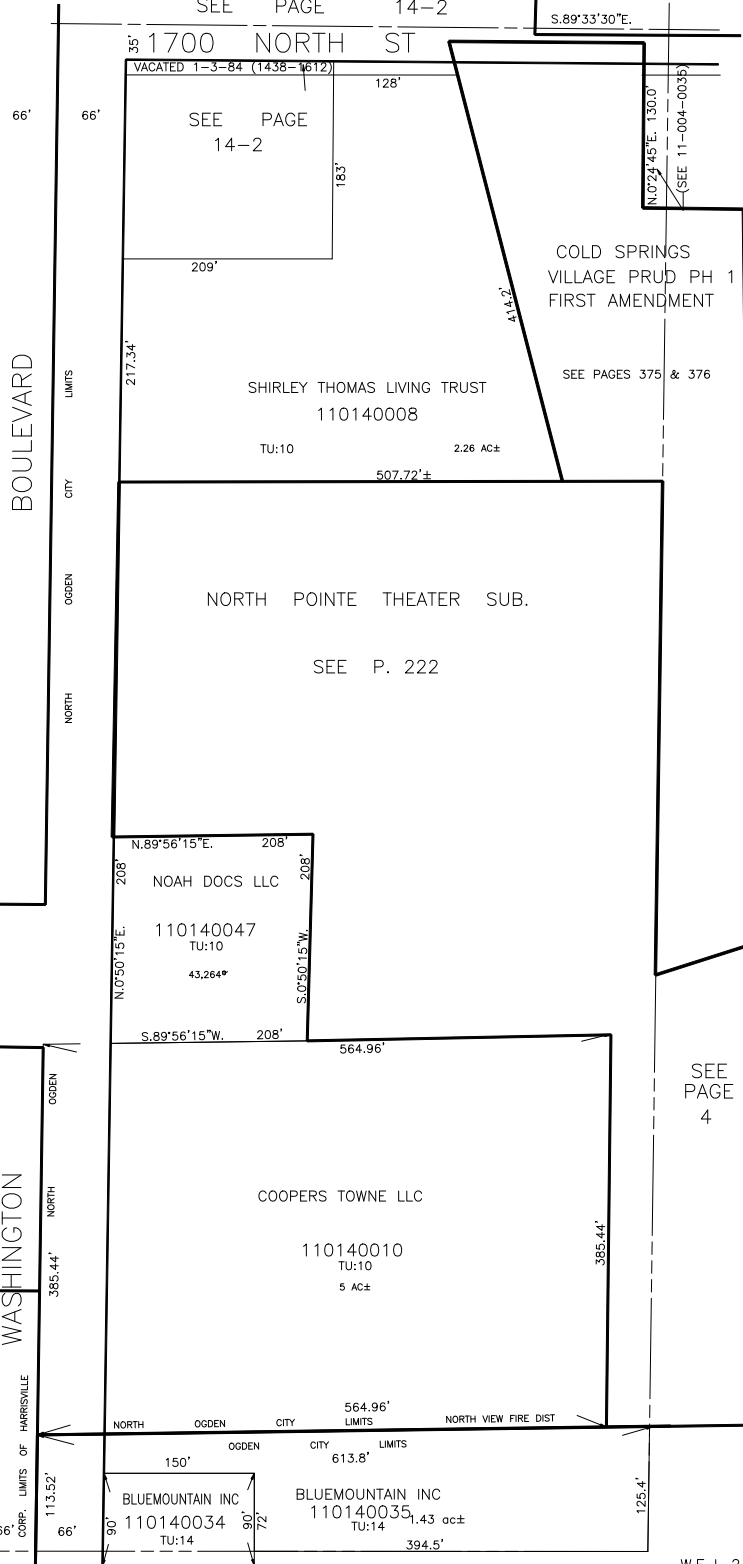
PARCEL NO.  
110140007 TO 110140011  
110140024 TO 110140028  
110140034  
110140035  
110140047  
110140054

200'  
SHANNA LYN LAFLEUR  
ETAL  
110140024  
TU:07  
200'

102.30' S.89°12'E. 427.06'  
NORMAN E LONGHURST  
& WF DANIELE B  
110140052  
TU:07 1 AC±  
102.00' N.0°48'E. 102.00'  
N.89°12'W. 427.06'  
GOOD-ONE AUTO SALES & TRAILER RENTALS & SALES INC  
110140025  
TU 433 1.749 AC±  
256.94'

17.57' 186.80' R.O.W.  
MATTHEW RITCHIE  
& SUNI SPOUSE  
110140026  
TU:07  
186.80'  
FAMILY TRUST AGREEMENT  
OF FRANCES EDITH SHAFFER  
22-JUNE-2014  
110140027  
14,227\* TU:07

234'  
UTANG MANAGEMENT LLC  
(SUNSET VIEW DEV LLC CLAIMS)  
110140028  
TU:12 19,890 SQ FT  
15' R.O.W.



SEE PAGE 14-1

SEE PAGE 4

11